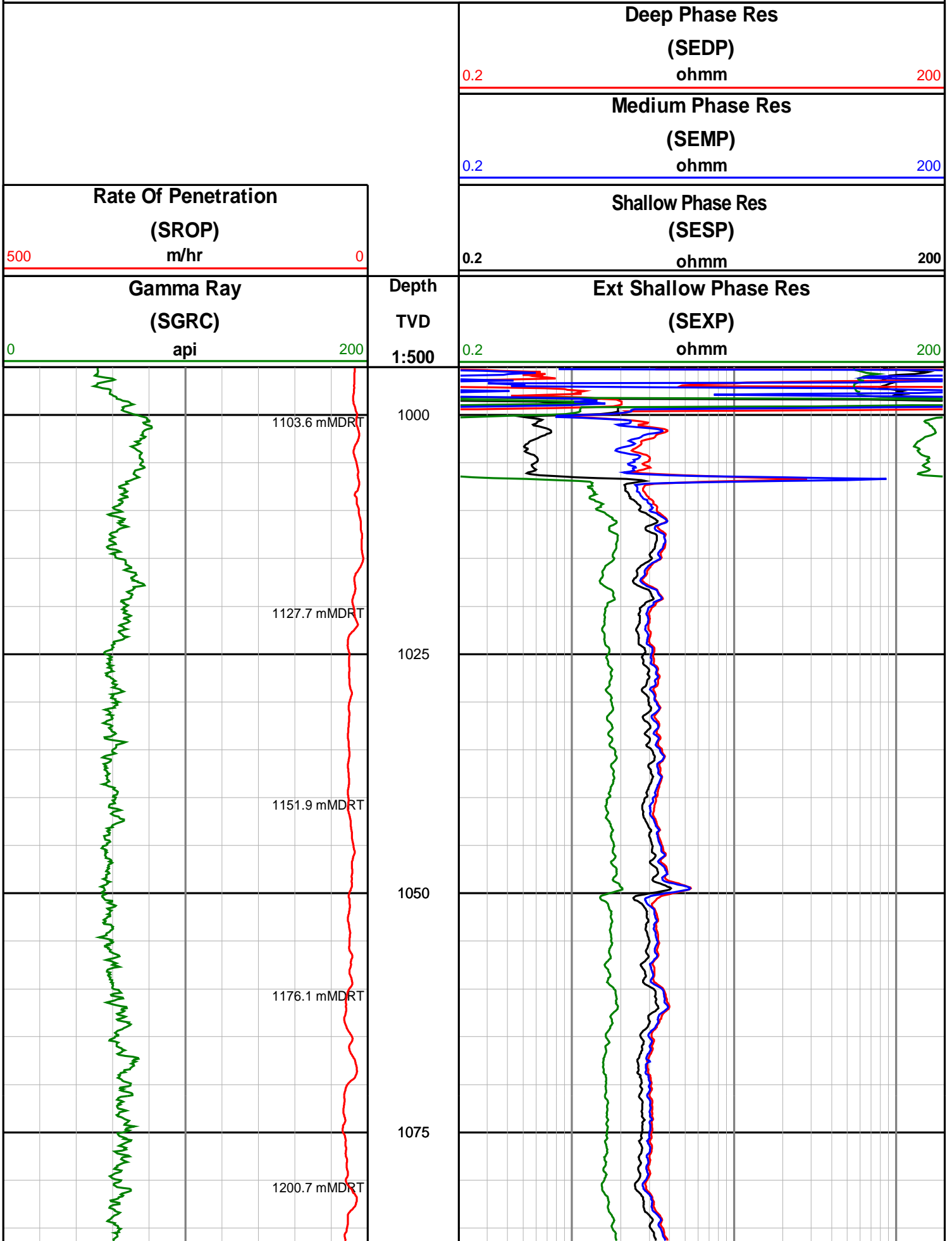
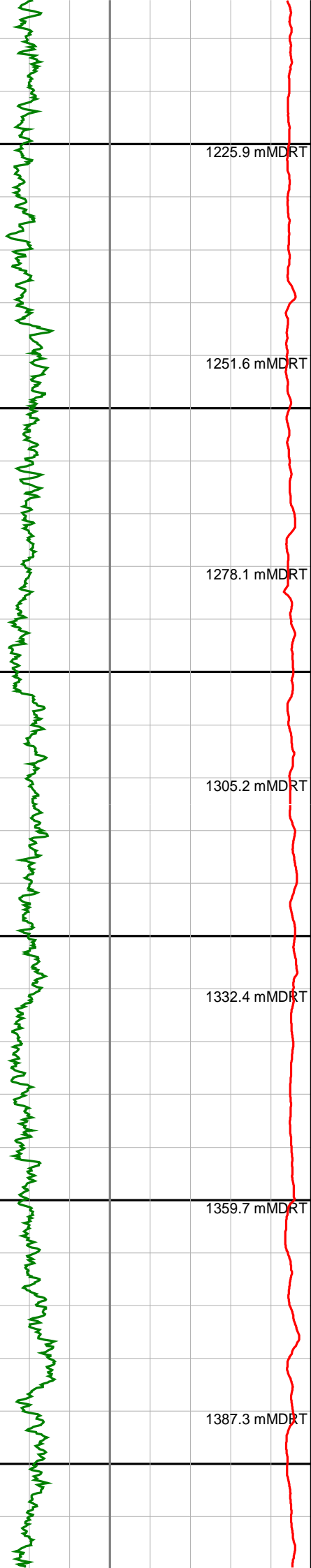


Anzon Australia Ltd

Basker-3

Recorded/Realtime LWD Log (Permanent Datum - LAT)





1100

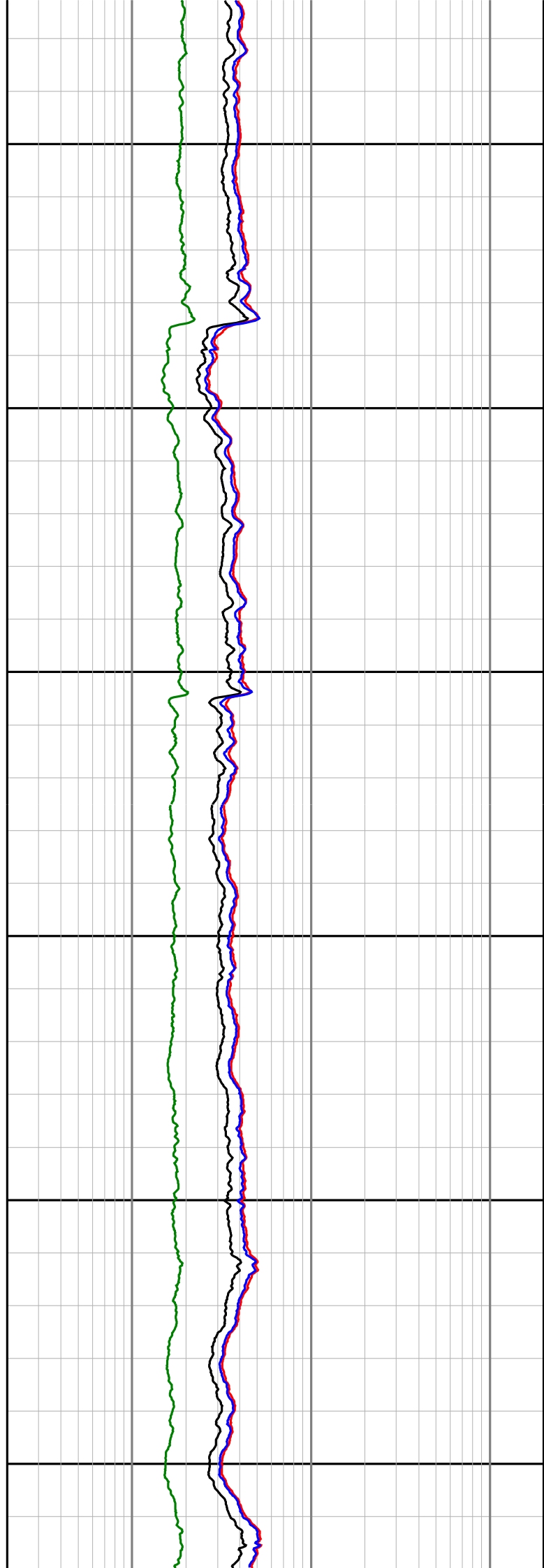
1125

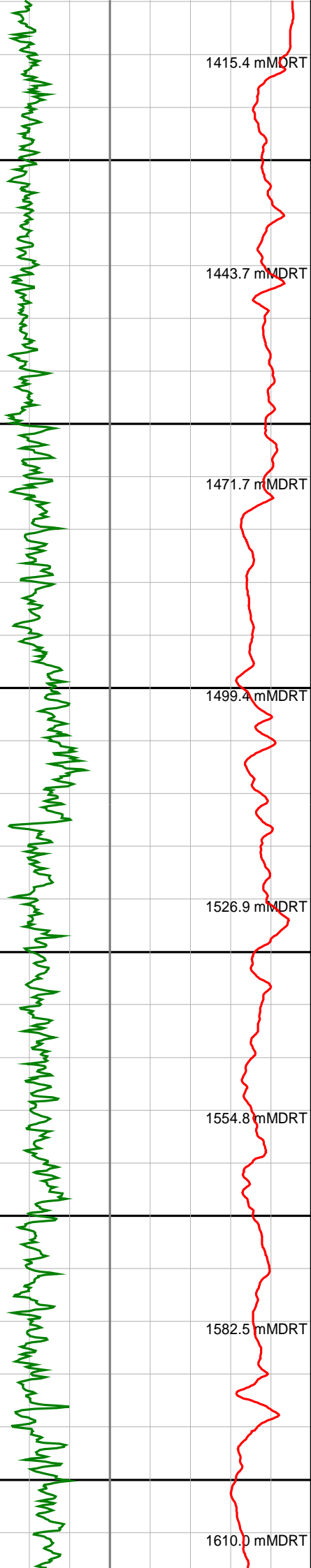
1150

1175

1200

1225





1250

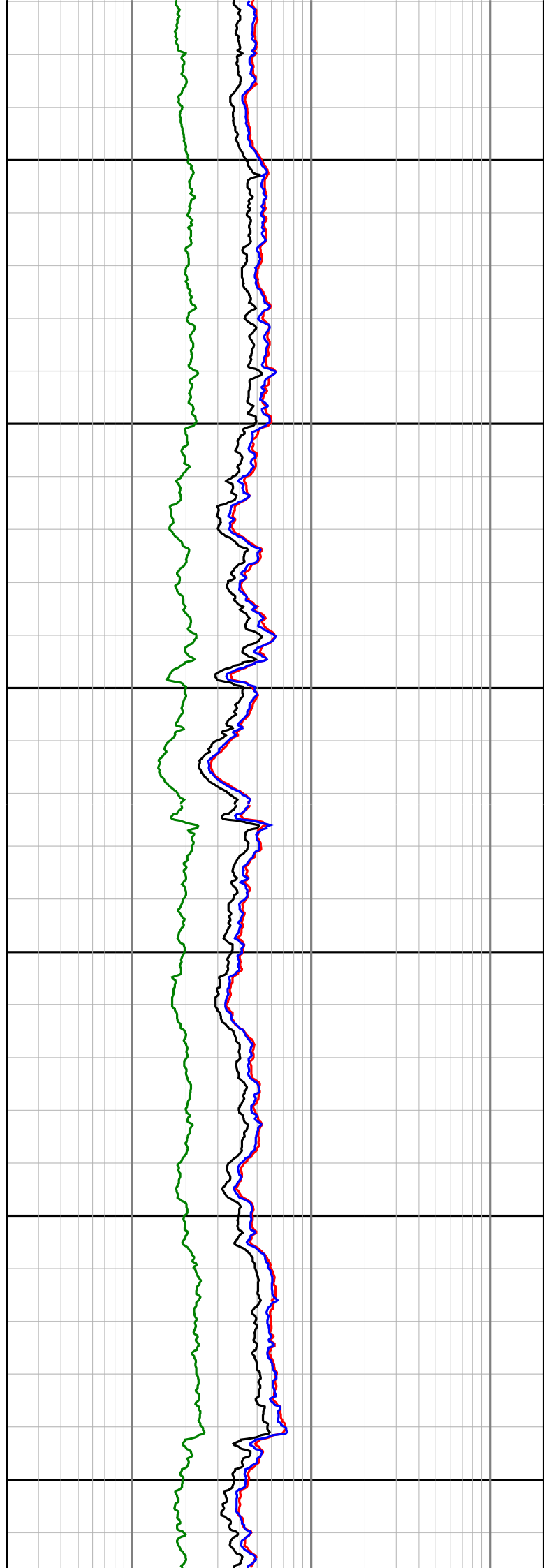
1275

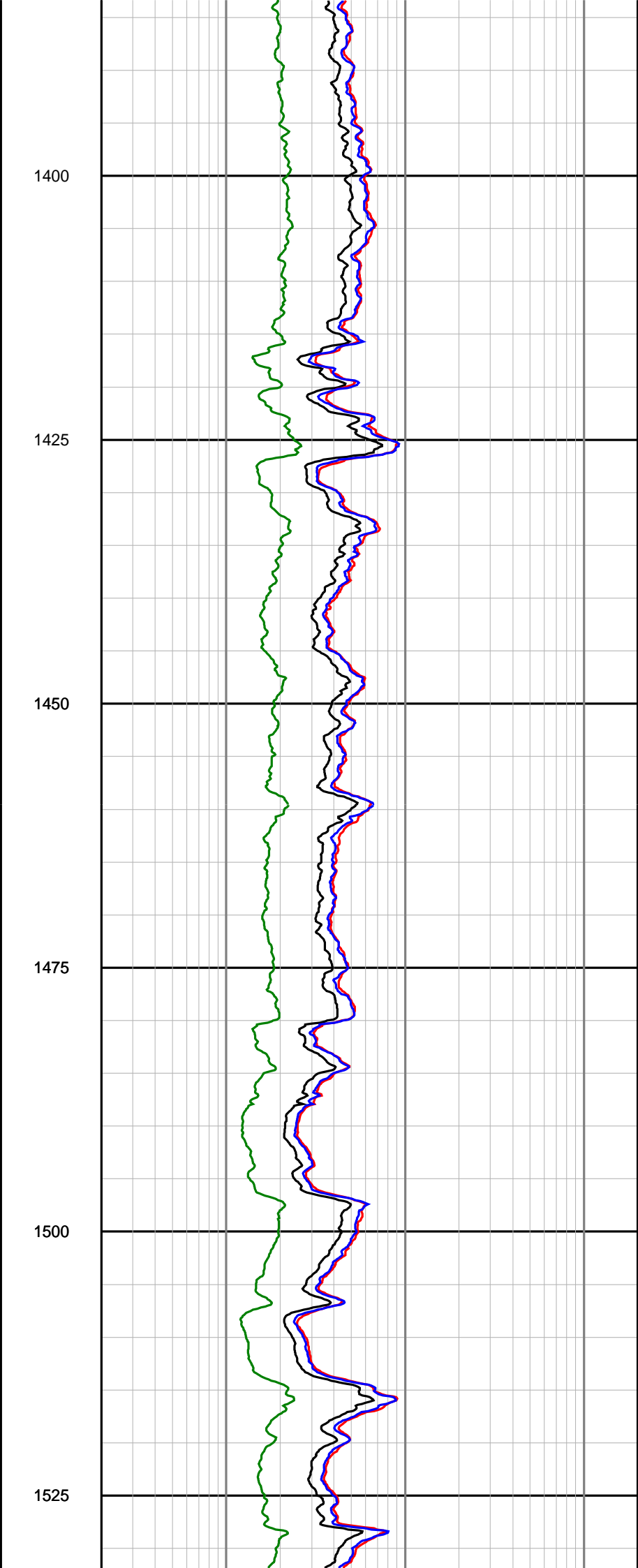
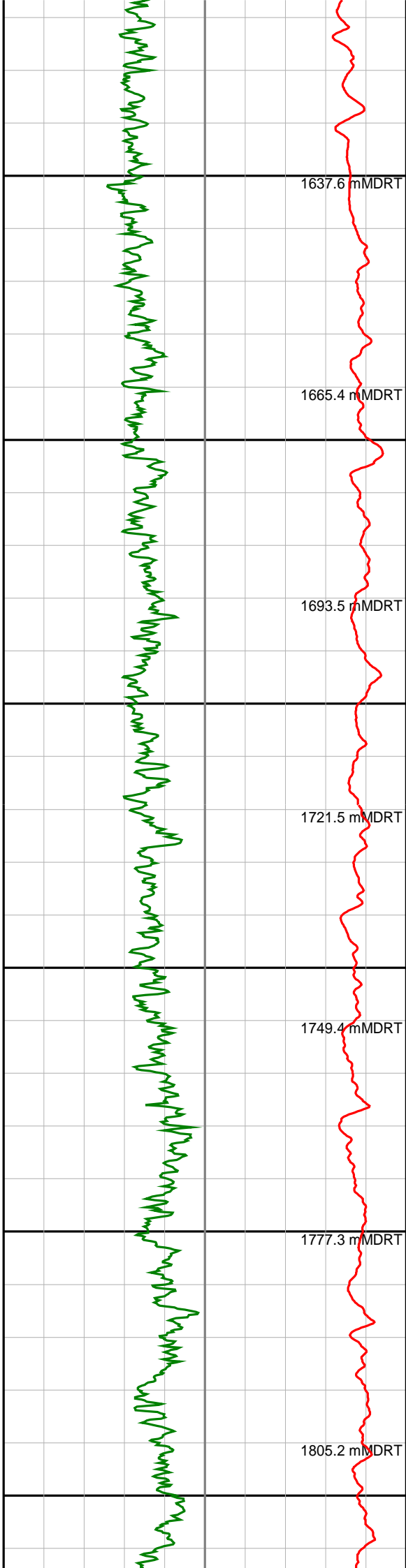
1300

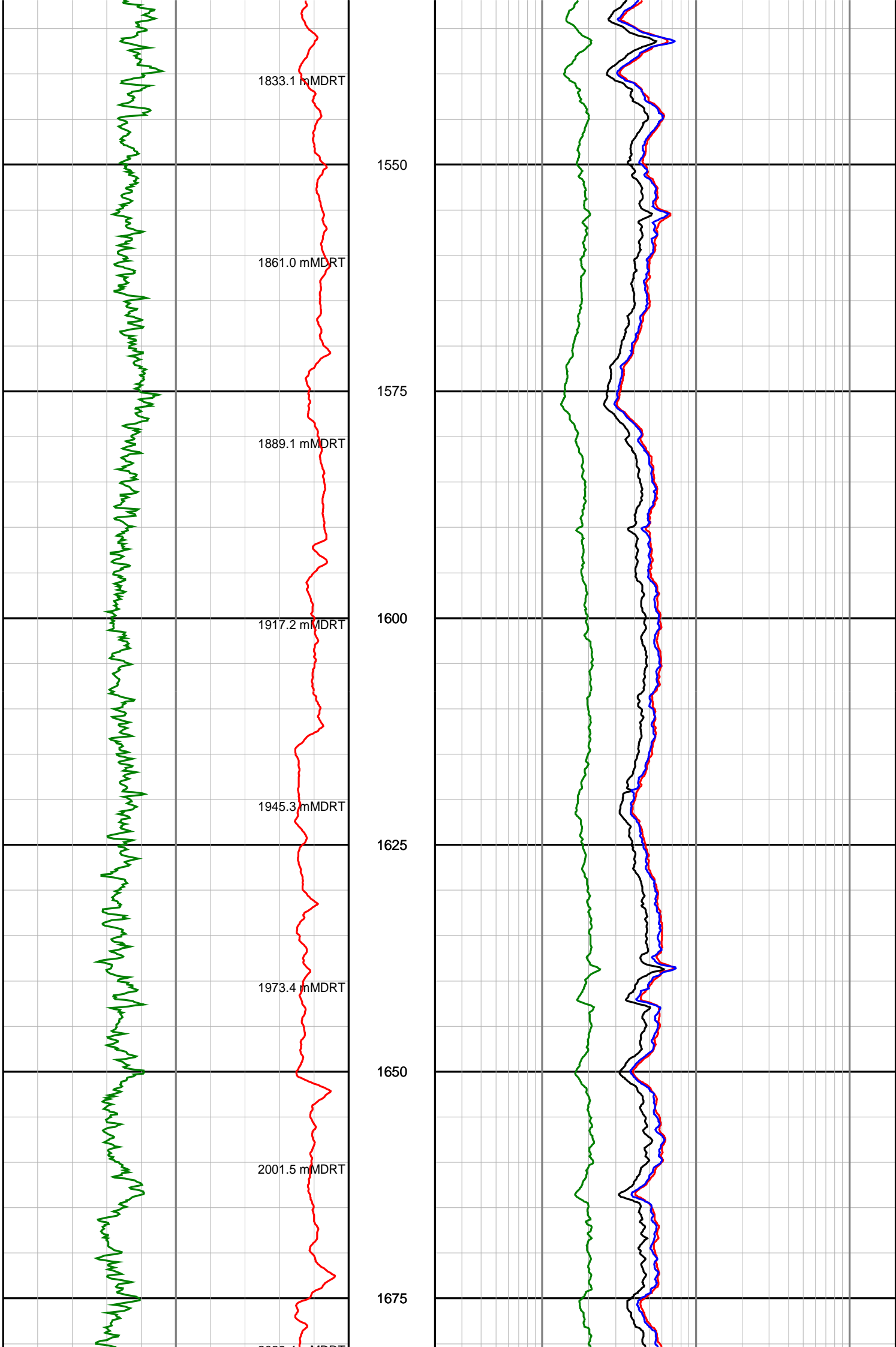
1325

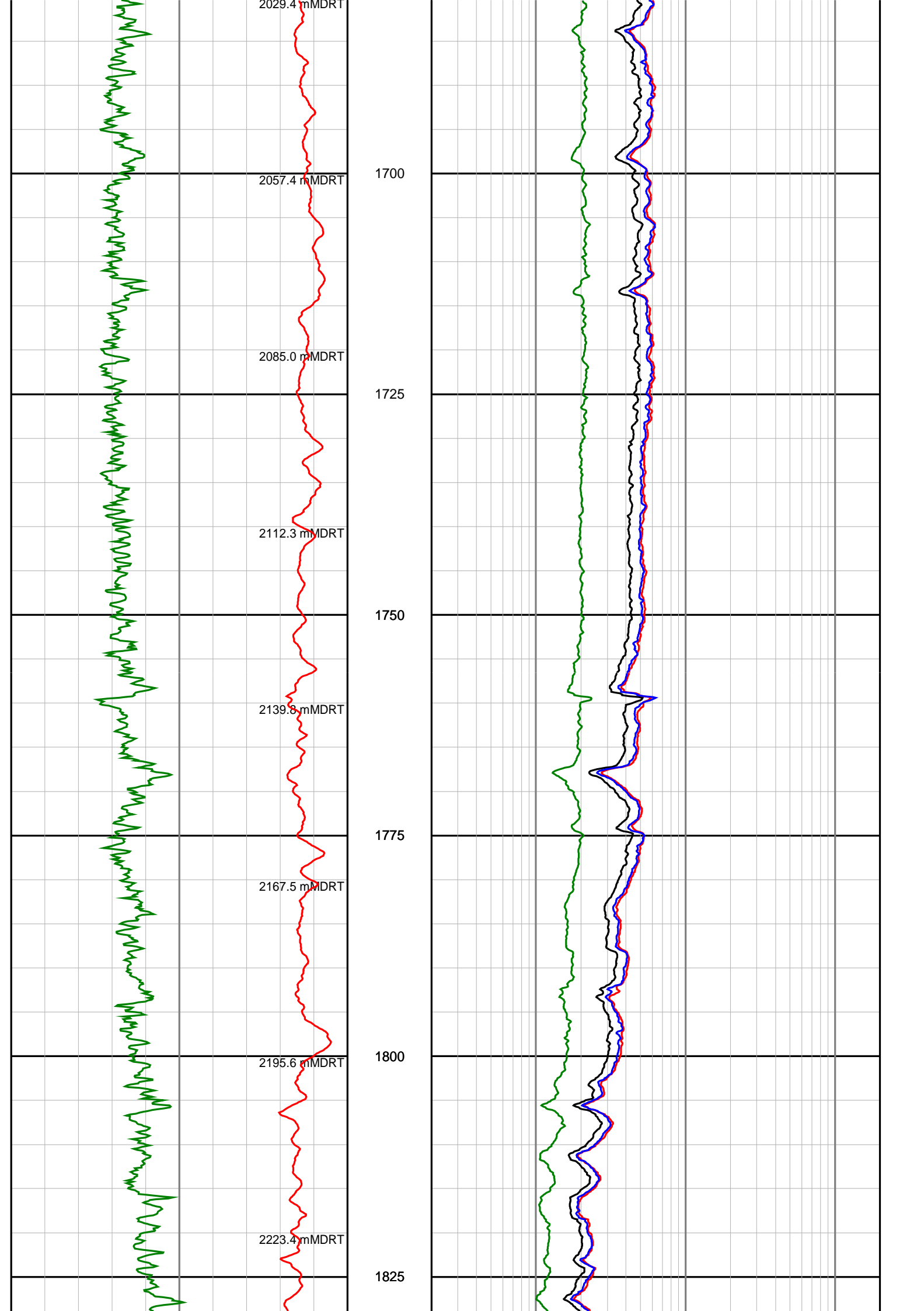
1350

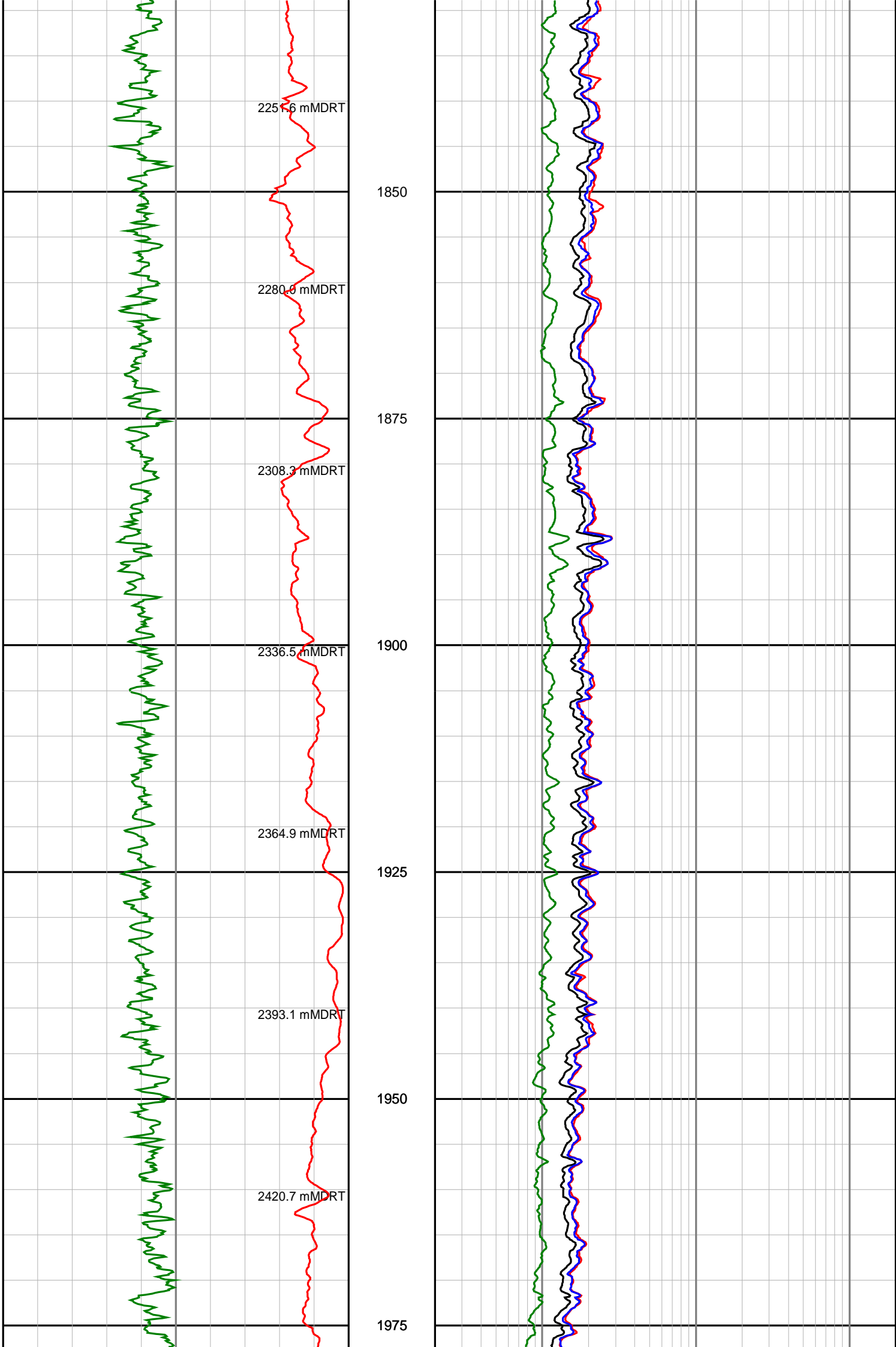
1375

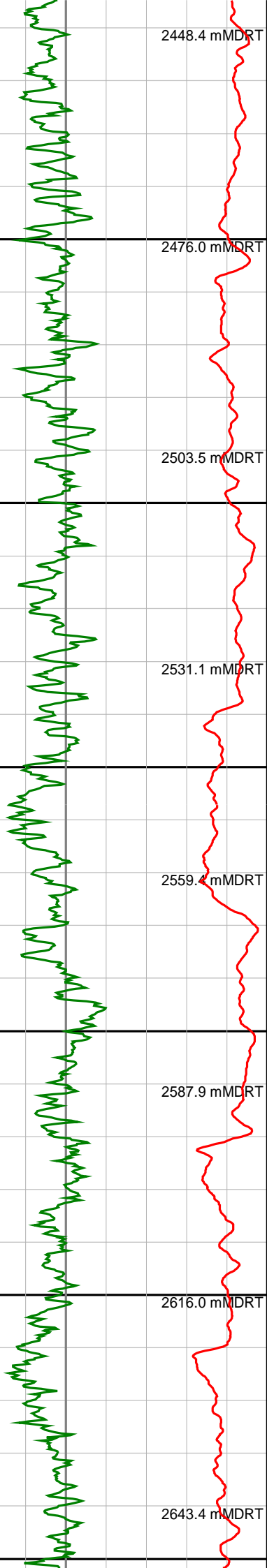












2000

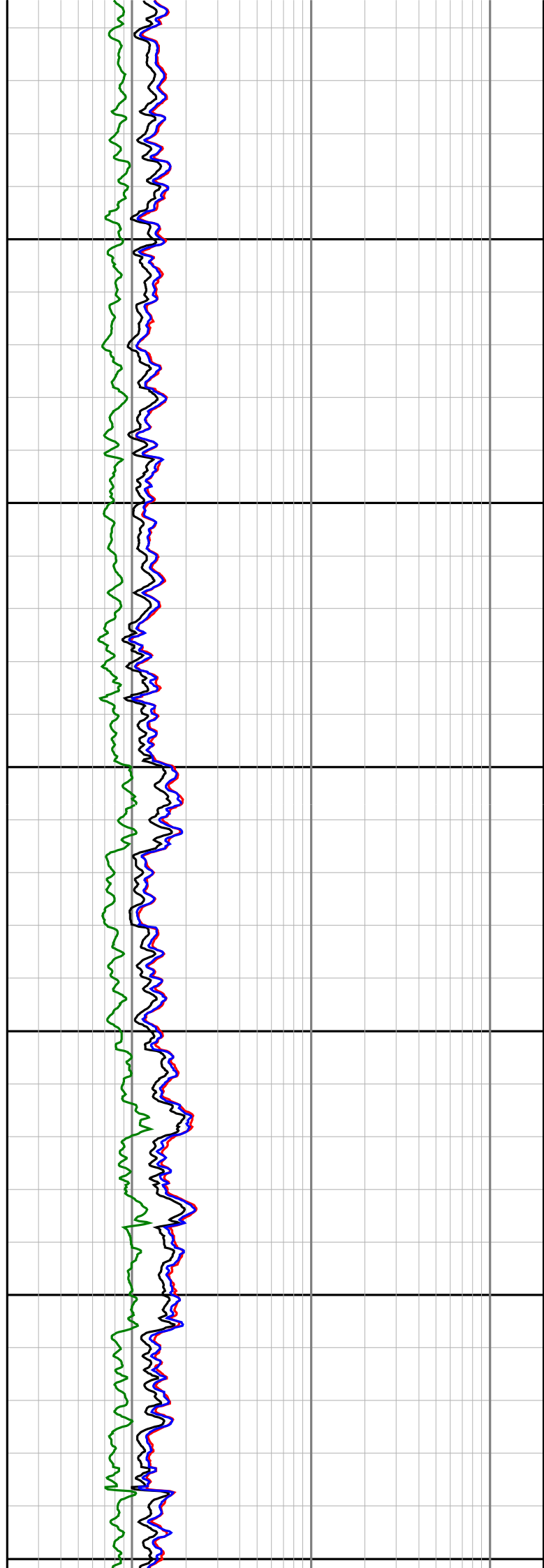
2025

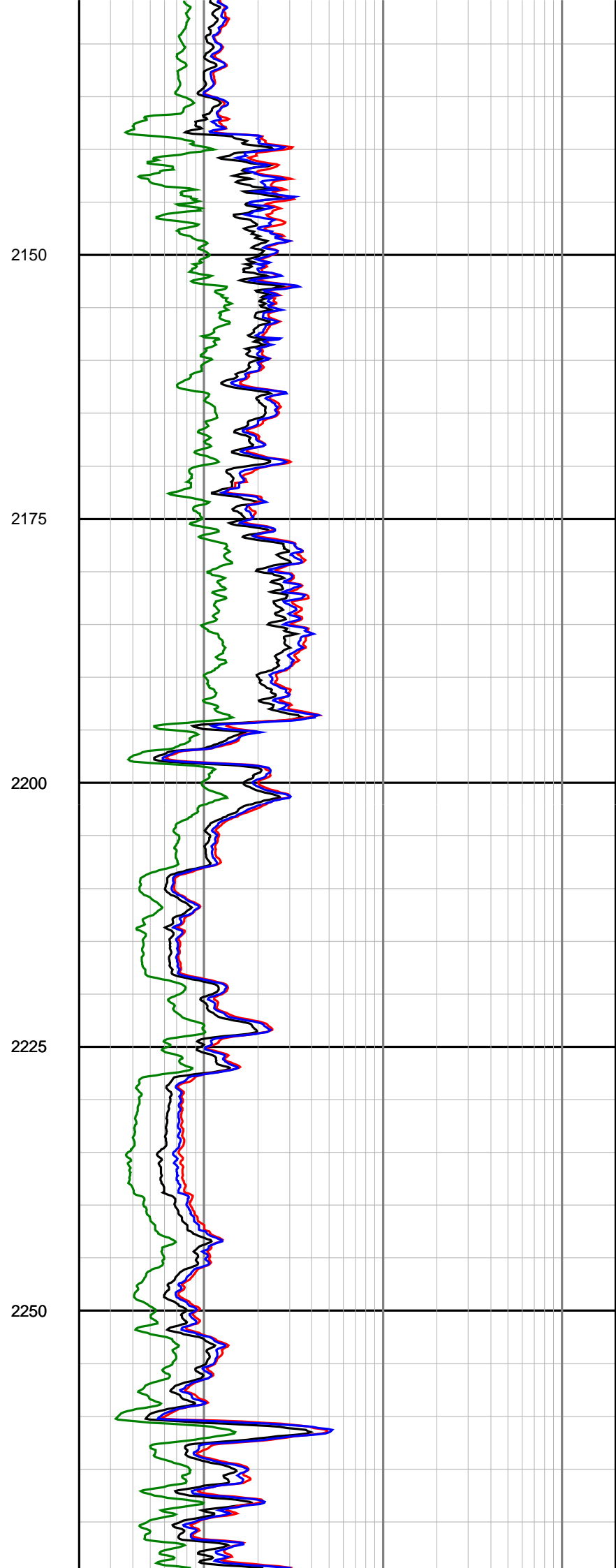
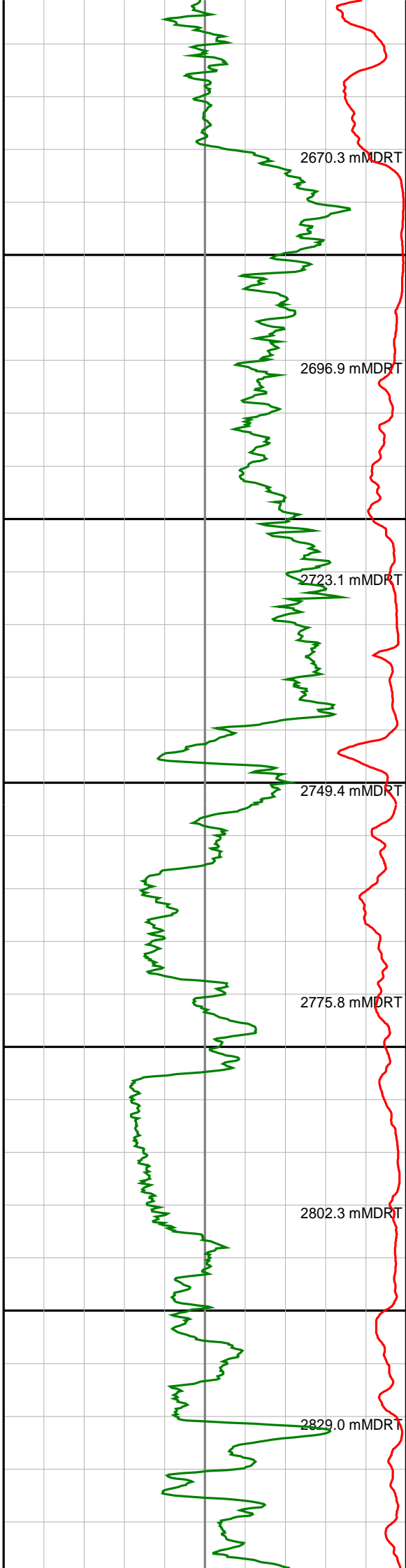
2050

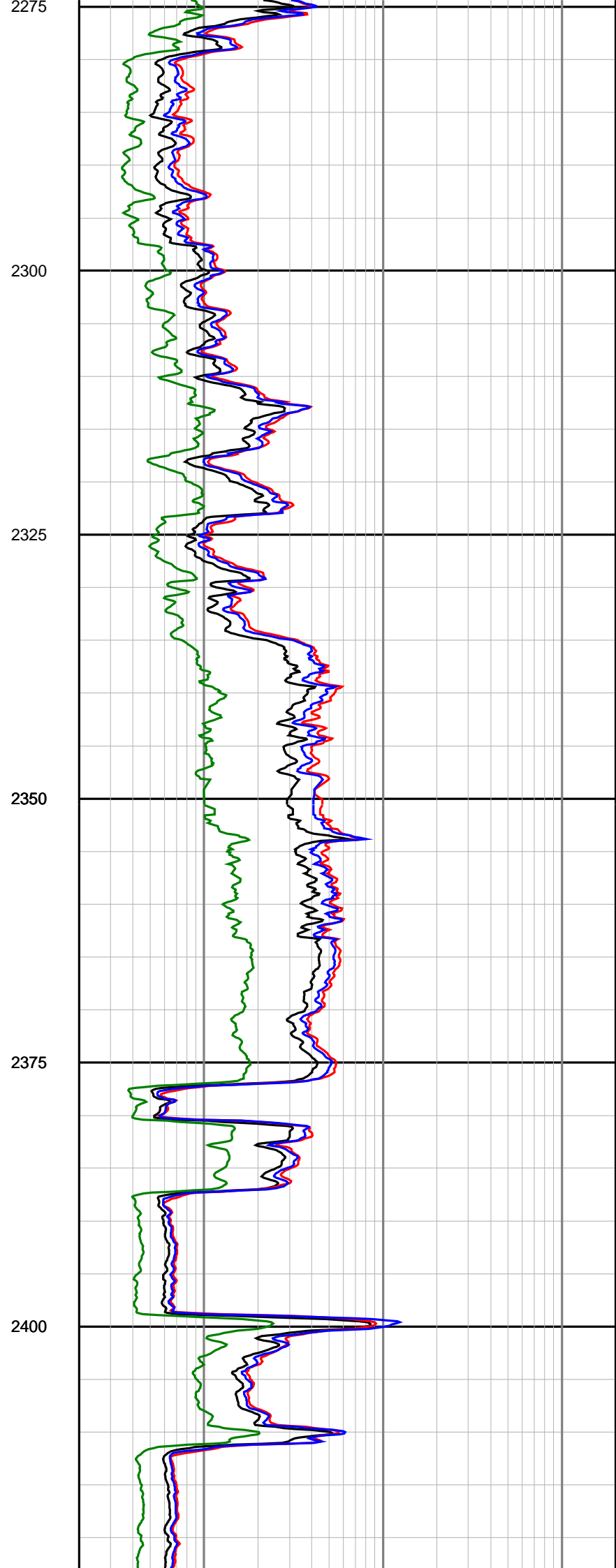
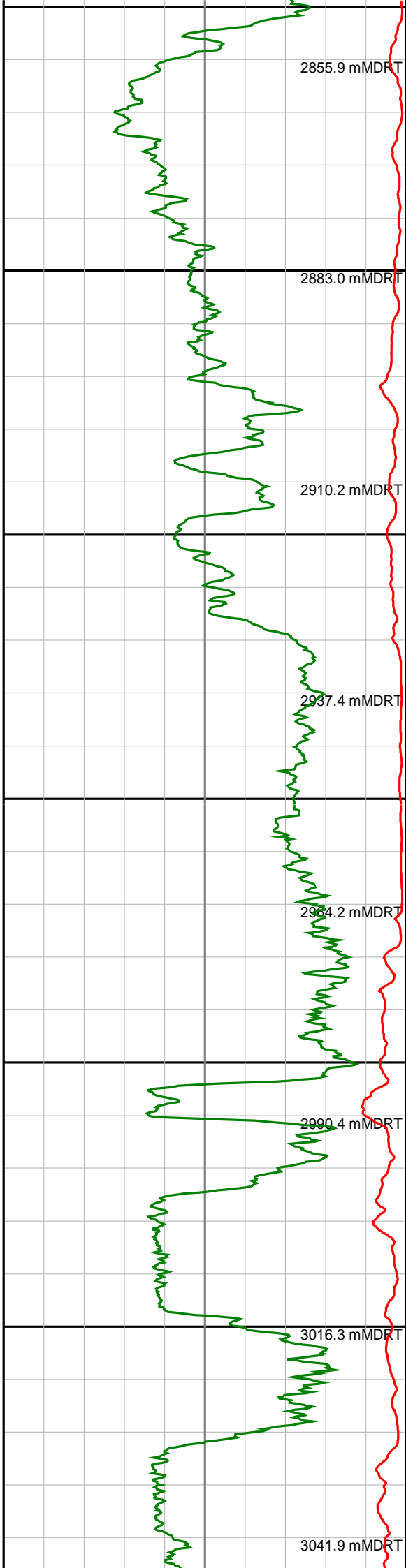
2075

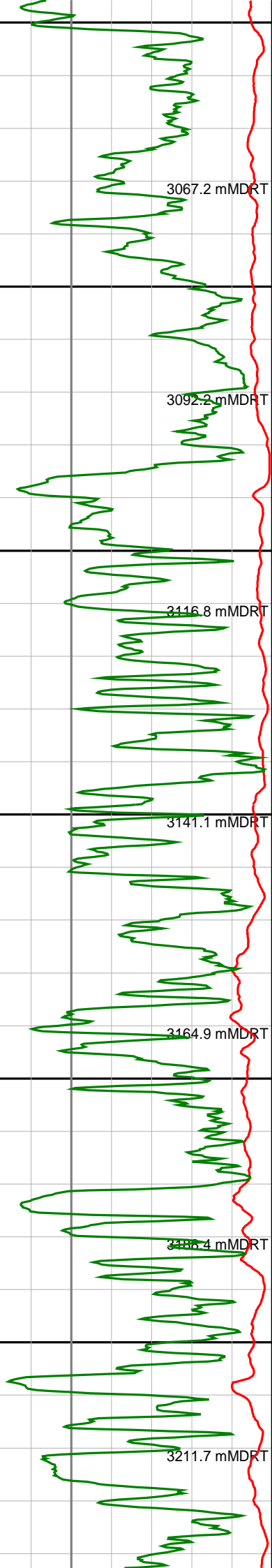
2100

2125

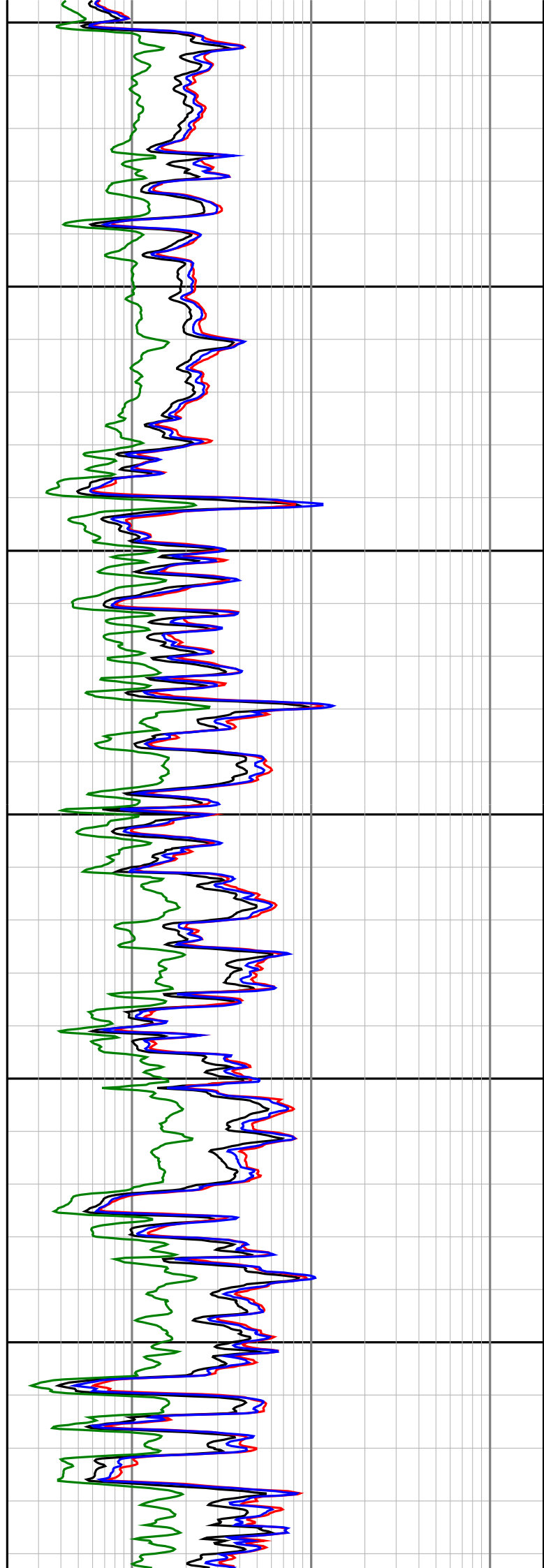


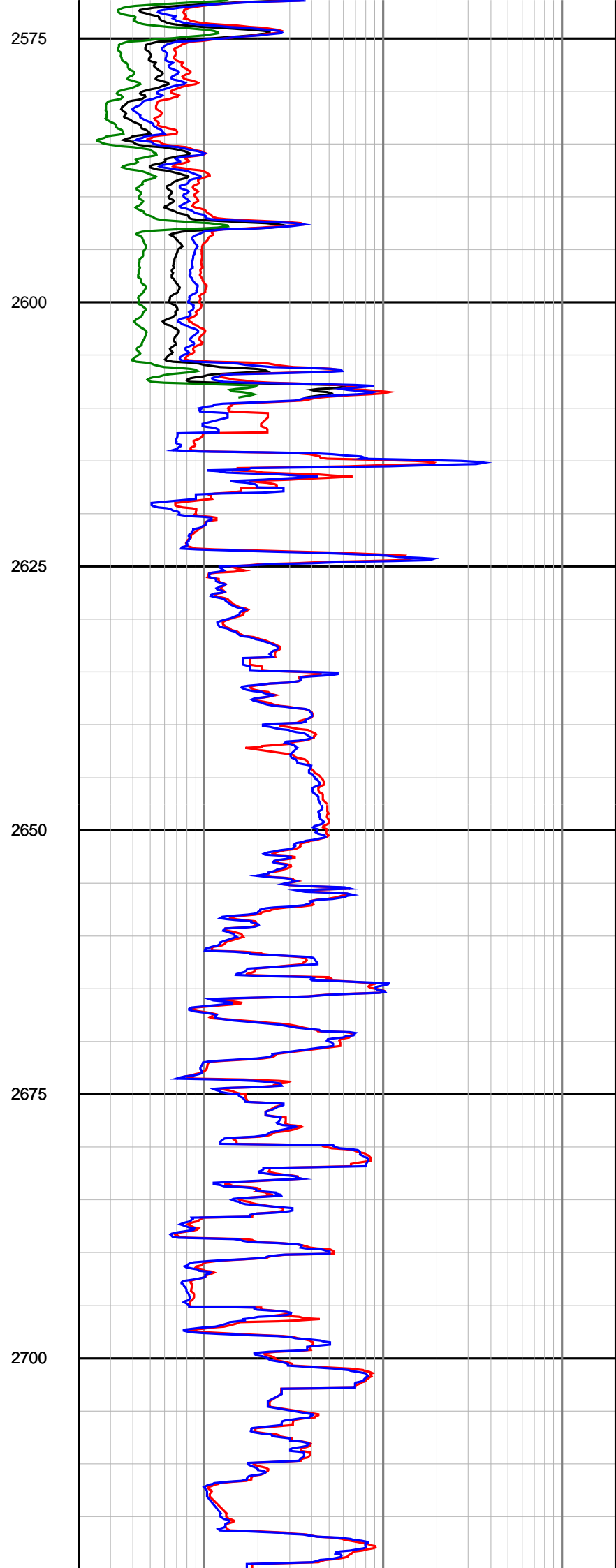
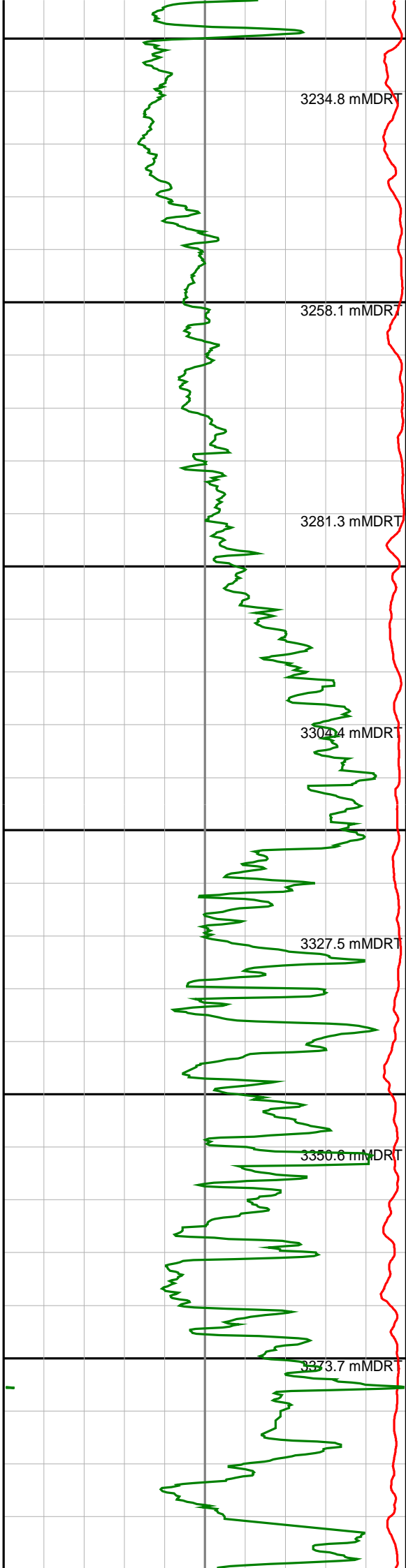


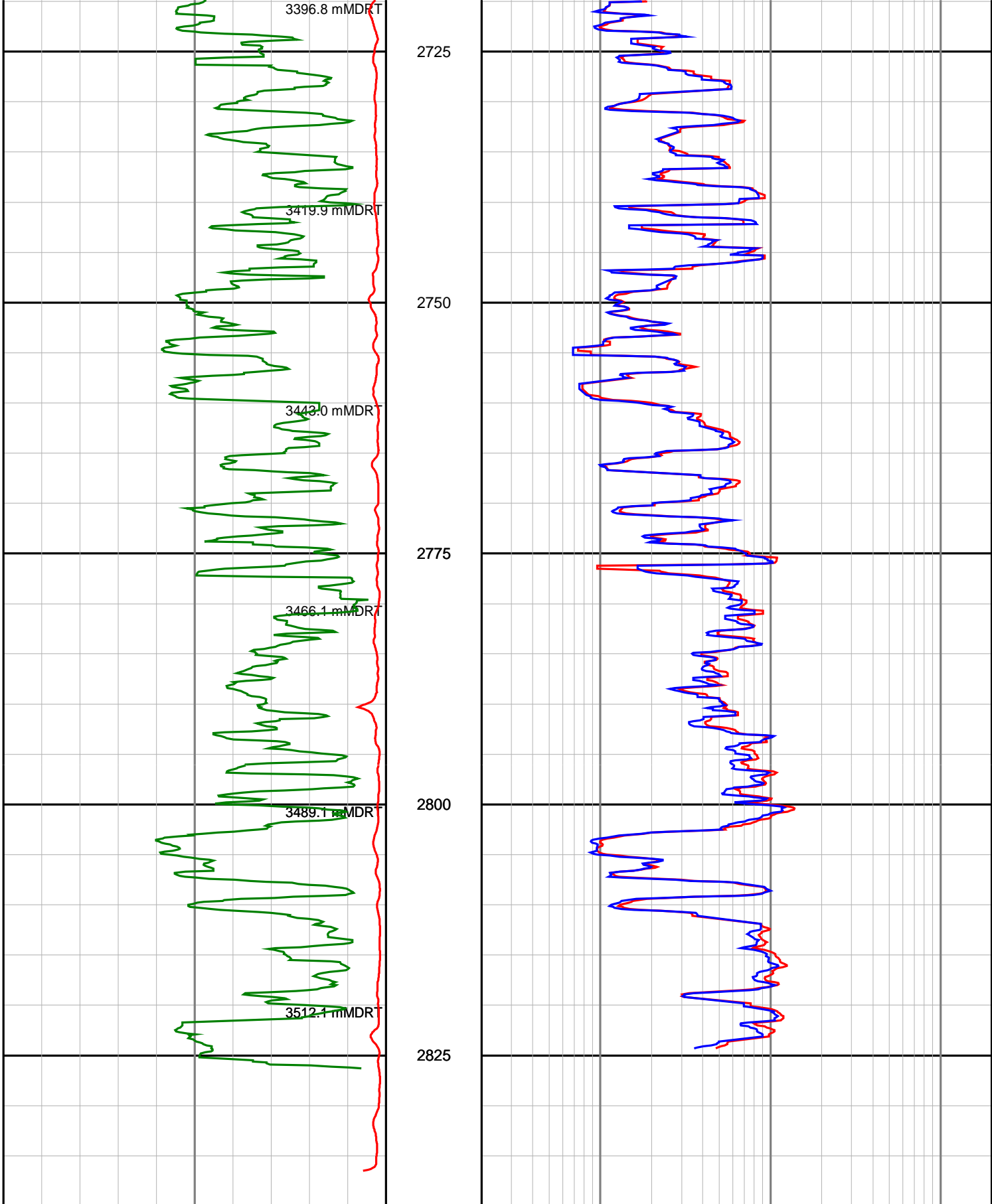




2425
2450
2475
2500
2525
2550







Gamma Ray (SGRC) api	0	200
Rate Of Penetration (SROP) m/hr	500	0

Depth
TVD
1:500

Ext Shallow Phase Res (SEXP) ohmm	0.2	200
Shallow Phase Res (SESP) ohmm	0.2	200
Medium Phase Res (SEMP) ohmm	0.2	200

Deep Phase Res

(SEDP)

ohmm

0.2

200